

STOCKBURY OBSERVER

AND SOUTH GREEN

'In the Garden of England'



NOVEMBER HALL DIARY

Tues	1st	Music + Movement	9.30-10.30am
		Bowls	2.00-4.00pm
		NSYC	7.30-9.30pm
Wed	2nd	Pilates	9.30-10.30pm
Thur	3rd	Gardeners	8.00-10.00pm
Fri	4th	Dancing Club	8.00-10.30 pm
Sun	6th	Dog Club - Field	10.00-11.00am
Tues	8th	Music + Movement	9.30-10.30am
		Bowls	2.00-4.00pm
		Harrow Community Bid Meeting	7.00-8.30pm
Wed	9th	Pilates	9.30-10.30pm
		WI	2.00-4.00pm
Thur	10th	Bowls	7.30-9.30 pm
Fri	11th	Dancing Club	8.00-10.30 pm
Sat	12th		
Sun	13th	Dog Club - Field	10.00-11.00am
		Chrysanthemum Show	
Tues	15th	Music + Movement	
		NSYC	7.30-9.30pm
Wed	16th	Pilates	9.30-10.30 am
		Craft and Chatter	1.00-3.00pm
		Parish Council	7.30-9.30pm
Thur	17th	Bowls	7.30-9.30pm
Fri	18th	Dancing Club	8.00-10.30 pm
Sat	19th	Church Fun Quiz Night	7.30-10.30pm
Sun	20th	Dog Club - Field	10.00-11.00am
Tue	22nd	Music + Movement	9.30-10.30am
		Bowls	2.00-4.00pm
Wed	23rd	Pilates	9.30-10.30 am
Thur	24th	Bowls	7.30-9.30 pm
Fri	25th	Dancing Club	8.00-10.30 pm
Sat	26th	Art Gallery	11.00am-3.00pm
		Private Booking	6.00-11.00pm
Sun	27th	Dog Club - Field	10.00-11.00am
		Private Booking	12.45-5.00pm
Tues	29th	Music + Movement	9.30-10.30am
Tues	29th	Bowls	2.00-4.00pm
Wed	30th		

The Harrow - Stockbury

Following the very successful meeting in the village hall on 27th September, when 120 local residents attended, Chris Porter, Phil Woods, Alan Cooke and Anne Southern are making good progress in putting together a plan for purchasing the pub as a community. The next step will be to hold a meeting for all potential investors and it is proposed that this be held on

Tuesday 8th November at 7.00pm

in the village hall. At this meeting, you will be shown

What do we mean by a community pub?

Reasons to invest

Security of your investment plus outline conditions

What we need to do to decide how to run the pub.

The aim is to have widespread share ownership with minimum investment at an affordable level for as many as possible

Please reserve this date in your diary and invite anyone else you think might be interested. If you have any questions ahead of the meeting, please ask.

Chris Porter 01795 843715

VERY IMPORTANT COMMUNITY

NEWS & INFORMATION !

Life saving defibrillator..... Page 5

Binbury Park developmentPage 3

Community Bus trip dates.....Page 3

Neighbourhood Watch meeting.....Page 5

Fun events, Art ExhibitionPage 12

Church Quiz.....Page 3 ; W.I. carols.....Page 7

Christmas Fayre.....Page 10

Vehicle Maintenance and MOT centre

Servicing, Brakes, Clutches, Exhausts, Welding and general repairs

We MOT the following...



Cars
Vans
Motorbikes
Motorhomes
Mini buses
Quads
Trikes
Three Wheelers

Also...
**AIR CON
SERVICING AND
REPAIRS**

Free retest

01795 841007

MONDAY- FRIDAY 8am to 6pm SATURDAY 8am to 12.30pm

Tomsett Kent

Church Farm(next to the church)

Stockbury,

Sittingbourne ME9 7RD

www.tomsettkent.com



KENT WASTE

The Paddock
Detling Hill
Maidstone
Kent
ME143JG
01622 630705

LIQUID WASTE DISPOSAL

**DRAIN CLEANING, CESSPOOL EMPTYING, INTERCEPTOR WASTE, OIL AND SLUDGE
REMOVAL,**

CAMERA SURVEYS, FORECOURT CLEANING,

SEWAGE TREATMENT PLANTS

STOCKBURY PARISH

[Home](#) | [Council](#) | [Parish Plan](#) | [Church](#) | [Minibus](#) | [Memorial Hall](#) | [Local Businesses](#) | [Village Info](#) | [Observer](#) | [Clubs](#)



Visit us on:

www.stockbury.org.uk

**You get more with the
on-line Stockbury Observer!**

We're in Colour! More photos!

Got a question for Stockbury Parish Council? Send us an email to parishcouncil@stockbury.org.uk

St Mary Magdalene Church, Stockbury



The services in November are as follows:-

6th November – 3.00pm Sung Communion

13th November – 11.00am; Remembrance Day

20th November - 3.00pm Sung Communion

27th November – 6.00pm Evensong

NB The times have changed for the winter.

Details of the range of services held within the benefice of the six parishes, to which Stockbury belongs, and can also be found on the parishes' website – www.thesix.org.uk. or contact The Revd Liz Cox .

For Baptisms, Weddings and Funerals please contact The Revd Elizabeth Cox - tel. 01795 - 844241

Penny Stevens PCC secretary

St Augustine's RC Church Deanwood Drive, Rainham

Mass times are Saturday 10 am and 6 pm, Sunday 9.30 am and 11 am and week days 9.30 am every day

COMMUNITY BUS

With all the Christmas cards and gifts making their appearance in the shops enticing you to part with your hard earned cash, you are no doubt all too aware that Christmas is fast approaching once again.

With that in mind, we at HQ thought that maybe you might like to browse the stores and see what Christmas goodies are on offer somewhere different and have arranged a couple of Christmas shopping trips for you.

The trips are to the **Ashford Designer Outlet** on **Wednesday the 23rd November** and **Bluewater** on **Friday 2nd December**.

The fare for both of these trips is £8 return unless you are a National Bus Pass Holder, in which case your passes are valid for travel and will leave Stockbury Village at 9.30am, returning into the village at approximately 4pm.

If you would like to join us on either or both of our trips, please ring me to book your seat on **07551-454702** or send me an email at communitybus-stockbury@hotmail.co.uk.

Our usual terms and conditions apply.

I know some of you like to wander Newnham Court Shopping Village this time of year too. If you would like to be dropped off there on our way to Maidstone on a Tuesday between now and Christmas, we would be happy to make an additional stop there, just let me know your intention when you book your seat.

Happy Shopping !

Fiona

****THIS WOULD AFFECT STOCKBURY ****

“ Binbury Park ”

As you may know, a company called Quinn Estates is looking to build a major housing / industrial development extending from the top of Binbury Lane down the hill towards the show-ground. They plan to call it “Binbury Park”. There was a consultation event at Detling Village Hall a few weeks ago which outlined two options they were considering putting forward, but as yet no planning application has been made. Stockbury Parish Council (Stockbury P.C.) will be opposing the development as:

It would affect people living in Binbury Lane
The area concerned is scheduled as an AONB (Area of Outstanding Natural Beauty)
It would increase traffic on an already overloaded A249

Stockbury P.C. will be working closely with Detling P.C. who have also decided to oppose the development. Thurnham P.C., within whose boundary much of the development would be, will not be joining us in that opposition. Whilst things are moving relatively slowly at the moment, this will probably change when an application is made to Maidstone Borough Council and it will be difficult to keep people up to date via the Observer. For anyone who is interested in following what is happening in “real time”, I have started a Blog which will be updated as things happen. Please take a look; it also has the facility for comments, but these will be strictly moderated to keep the blog focused on facts rather than opinion so please do not take offence if your comment does not make it to the public pages.

The address is: **Binburypark.blogspot.co.uk** If you search for binbury park in Google, it will come up - top of the list.

Phil Woods

FUN QUIZ In aid of Stockbury Church on

Saturday 19th NOVEMBER 2016 at

Stockbury Village Hall

7.30pm start

£5.50 per person

includes nibbles (bring own drinks)

Teams of 6 - 8 per table

To book a table Contact

Brenda Mace 01622 884746

OCTOBER STOCKBURY CHURCH DRAW

1st - Mike Wegg (55)

2nd - Alan Amos (182) (buy extra tickets next year - no cheque needed)

3rd - Caroline Buck (43)

St Mary Magdalene Church, Stockbury



The services in November are as follows:-

6th November – 3.00pm Sung Communion

13th November – 11.00am; Remembrance Day

20th November - 3.00pm Sung Communion

27th November – 6.00pm Evensong

NB The times have changed for the winter.

Details of the range of services held within the benefice of the six parishes, to which Stockbury belongs, and can also be found on the parishes' website – www.thesix.org.uk. or contact The Revd Liz Cox .

For Baptisms, Weddings and Funerals please contact The Revd Elizabeth Cox - tel. 01795 - 844241

Penny Stevens PCC secretary

St Augustine's RC Church Deanwood Drive, Rainham

Mass times are Saturday 10 am and 6 pm, Sunday 9.30 am and 11 am and week days 9.30 am every day

COMMUNITY BUS

With all the Christmas cards and gifts making their appearance in the shops enticing you to part with your hard earned cash, you are no doubt all too aware that Christmas is fast approaching once again.

With that in mind, we at HQ thought that maybe you might like to browse the stores and see what Christmas goodies are on offer somewhere different and have arranged a couple of Christmas shopping trips for you.

The trips are to the **Ashford Designer Outlet** on **Wednesday the 23rd November** and **Bluewater** on **Friday 2nd December**.

The fare for both of these trips is £8 return unless you are a National Bus Pass Holder, in which case your passes are valid for travel and will leave Stockbury Village at 9.30am, returning into the village at approximately 4pm.

If you would like to join us on either or both of our trips, please ring me to book your seat on **07551-454702** or send me an email at communitybus-stockbury@hotmail.co.uk.

Our usual terms and conditions apply.

I know some of you like to wander Newnham Court Shopping Village this time of year too. If you would like to be dropped off there on our way to Maidstone on a Tuesday between now and Christmas, we would be happy to make an additional stop there, just let me know your intention when you book your seat.

Happy Shopping !

Fiona

****THIS WOULD AFFECT STOCKBURY ****

“ Binbury Park ”

As you may know, a company called Quinn Estates is looking to build a major housing / industrial development extending from the top of Binbury Lane down the hill towards the show-ground. They plan to call it “Binbury Park”. There was a consultation event at Detling Village Hall a few weeks ago which outlined two options they were considering putting forward, but as yet no planning application has been made. Stockbury Parish Council (Stockbury P.C.) will be opposing the development as:

It would affect people living in Binbury Lane

The area concerned is scheduled as an AONB (Area of Outstanding Natural Beauty)

It would increase traffic on an already overloaded A249

Stockbury P.C. will be working closely with Detling P.C. who have also decided to oppose the development. Thurnham P.C., within whose boundary much of the development would be, will not be joining us in that opposition. Whilst things are moving relatively slowly at the moment, this will probably change when an application is made to Maidstone Borough Council and it will be difficult to keep people up to date via the Observer. For anyone who is interested in following what is happening in “real time”, I have started a Blog which will be updated as things happen. Please take a look; it also has the facility for comments, but these will be strictly moderated to keep the blog focused on facts rather than opinion so please do not take offence if your comment does not make it to the public pages.

The address is: **Binburypark.blogspot.co.uk** If you search for binbury park in Google, it will come up - top of the list.

Phil Woods

FUN QUIZ In aid of Stockbury Church on

Saturday 19th NOVEMBER 2016 at

Stockbury Village Hall

7.30pm start

£5.50 per person

includes nibbles (bring own drinks)

Teams of 6 - 8 per table

To book a table Contact

Brenda Mace 01622 884746

OCTOBER STOCKBURY CHURCH DRAW

1st - Mike Wegg (55)

2nd - Alan Amos (182) (buy extra tickets next year - no cheque needed)

3rd - Caroline Buck (43)

The Harrow Public House STOCKBURY— Frances and Channon would like to wish a warm welcome to the pub

Telephone: 01795 228177 -



Food is served every day.

Monday –Saturday 12.00pm-8.00pm

Our Opening Times are:

Mon—Sat 12.00 am – Quiet

Sunday 12.00 pm – 7.00

Sunday lunches served from 12-5 pm (last orders 4.30 pm) Every 3rd Week of month Fish & Chips. Sunday Roast 2 courses £10, booking advised.

Please look out for our specials board !

O.A.P. SPECIALS Mon—Fri 12—4p.m. 2 courses £7.50

Proposal for a Letters Column

We'll publish them subject to our usual considerations and procedures. The Editor reserves the right to publish or shorten articles letters and notices. **All contributions must have a genuine name and contact number or email.**

MUST BE IN WORD. Views expressed by contributors are those of the author and not those of the Editor or Parish Council. **To contact the editor:**

Email: stockburyobserver@gmail.com

MOBILE LIBRARY DATES

NOVEMBER 10th

24th



Musical Playtime is coming to Stockbury!

Musical Playtime classes create a lively and exciting atmosphere for you and your child based on repetition and routine.

Activities promote children's natural creativity, curiosity and their need to explore through movement !

Come and join Carley !

Classes begin on Tuesday 13th September 2016

at IOam in Stockbury Village Hall

The Street, Stockbury, Kent. ME9 7UD

£4.50 per session or 6 sessions for £20.

07854 620 611 www.musicalplaytime.co.uk

Stockbury WI

Eleven members and friends, two guide dogs, Buckley and Magic attended the September meeting.

The speaker said "At the start he was presented with a ball of fluff, 7months old. He immediately started training, socialising, feeding and walking him in a straight line. Training for buses, theatre supermarkets and London Eye, he is fed on dry food, twice by whistle command and when free running he comes back to a whistle. He is not allowed in the kitchen. He is familiarised with pigeons, cats, birds etc. He started puppy classes at 2 months. If you see a dog with its "coat and harness" on they are in working mode so do not stroke or touch. After 1 yr he went to "big school" where he is matched with an owner. They spend 2 weeks in a hotel with the dog and they walk local routes to familiarise the dog with its surroundings.

The Guide Dogs Association pay rent, food, vets bills, microchips, collars, leads and coats for the whole of its working life. They breed their own dogs so they get good stock.

The speaker said he does this voluntary work because he feels rewarded in the guide dog giving blind people freedom, confidence and independence making such a difference to their lives.

Not all dogs make it through the system and they are offered as buddy dogs.

We had a very enjoyable evening, with much spoiling of the dogs.

At our next meeting on **Wednesday 9th November** Dr. Kneif is telling us all about "Land Army Girls". This is an open meeting and commences at 2pm in Stockbury Village Hall.
Brenda Mace

STOCKBURY NEIGHBOURHOOD WATCH

A new Neighbourhood Watch scheme is being formed and we are looking at starting on

Wednesday 7th December 7pm at the Village Hall.

Its success depends on you. The meeting will explain how it works and will be attended by the Chair of Maidstone & District NHW Association and Kent Police. There will be an opportunity to ask questions and at the same time we hope to gather email addresses, telephone numbers and details of anyone who will be prepared to represent their local area as a co-ordinator. This will be an opportunity to join together and help protect our community.

Please attend and show your support.

MIKE BINGHAM

STOP PRESS

A lifeline has been installed in the heart of our community

PARISH DEFIBRILLATOR NOW OPERATIONABLE

IN EMERGENCY DIAL 999

TO OBTAIN DOOR LOCK CODE.

Observant members of the parish may have noticed the arrival of the bright yellow cabinet on the front wall of the Village Hall.

The lifesaving device, an "automated external defibrillator", has been funded by Kent County Councillor, Jenny Whittle and Stockbury Parish Council.

If someone calls 999 in an emergency, they will be given a code to open the lockable steel box where the system is kept.

No training is needed to operate the machine which once turned on will instruct the rescuer using step-by-step audible and visual instructions. Once the electrode pads have been attached to the casualty, the defibrillator continually monitors the patient and will identify if a shock is needed.

The unit has been registered with the ambulance service to ensure that it continually complies with current legislation. It will also be checked weekly to ensure it is in constant readiness.

SPC is pleased to be able to provide this piece of equipment which could potentially save someone's life.

"We hope people respect the defibrillator as any of us might need it one day".

We would like to thank Graham Seymour for donating his time and expertise in carrying out the electrical installation of the specially constructed storage cabinet.

Dave Tomsett

OBSERVER DEADLINE !

**IF YOU WANT TO ADVERTISE OR PUT A STORY IN
WE MUST HAVE IT BY**

FRIDAY NOVEMBER 18th 2016

Stockbury WI

Eleven members and friends, two guide dogs, Buckley and Magic attended the September meeting.

The speaker said "At the start he was presented with a ball of fluff, 7months old. He immediately started training, socialising, feeding and walking him in a straight line. Training for buses, theatre supermarkets and London Eye, he is fed on dry food, twice by whistle command and when free running he comes back to a whistle. He is not allowed in the kitchen. He is familiarised with pigeons, cats, birds etc. He started puppy classes at 2 months. If you see a dog with its "coat and harness" on they are in working mode so do not stroke or touch. After 1 yr he went to "big school" where he is matched with an owner. They spend 2 weeks in a hotel with the dog and they walk local routes to familiarise the dog with its surroundings.

The Guide Dogs Association pay rent, food, vets bills, microchips, collars, leads and coats for the whole of its working life. They breed their own dogs so they get good stock.

The speaker said he does this voluntary work because he feels rewarded in the guide dog giving blind people freedom, confidence and independence making such a difference to their lives.

Not all dogs make it through the system and they are offered as buddy dogs.

We had a very enjoyable evening, with much spoiling of the dogs.

At our next meeting on **Wednesday 9th November** Dr. Kneif is telling us all about "Land Army Girls". This is an open meeting and commences at 2pm in Stockbury Village Hall.
Brenda Mace

STOCKBURY NEIGHBOURHOOD WATCH

A new Neighbourhood Watch scheme is being formed and we are looking at starting on

Wednesday 7th December 7pm at the Village Hall.

Its success depends on you. The meeting will explain how it works and will be attended by the Chair of Maidstone & District NHW Association and Kent Police. There will be an opportunity to ask questions and at the same time we hope to gather email addresses, telephone numbers and details of anyone who will be prepared to represent their local area as a co-ordinator. This will be an opportunity to join together and help protect our community.

Please attend and show your support.

MIKE BINGHAM

STOP PRESS

A lifeline has been installed in the heart of our community

PARISH DEFIBRILLATOR NOW OPERATIONABLE

IN EMERGENCY DIAL 999

TO OBTAIN DOOR LOCK CODE.

Observant members of the parish may have noticed the arrival of the bright yellow cabinet on the front wall of the Village Hall.

The lifesaving device, an "automated external defibrillator", has been funded by Kent County Councillor, Jenny Whittle and Stockbury Parish Council.

If someone calls 999 in an emergency, they will be given a code to open the lockable steel box where the system is kept.

No training is needed to operate the machine which once turned on will instruct the rescuer using step-by-step audible and visual instructions. Once the electrode pads have been attached to the casualty, the defibrillator continually monitors the patient and will identify if a shock is needed.

The unit has been registered with the ambulance service to ensure that it continually complies with current legislation. It will also be checked weekly to ensure it is in constant readiness.

SPC is pleased to be able to provide this piece of equipment which could potentially save someone's life.

"We hope people respect the defibrillator as any of us might need it one day".

We would like to thank Graham Seymour for donating his time and expertise in carrying out the electrical installation of the specially constructed storage cabinet.

Dave Tomsett

OBSERVER DEADLINE !

**IF YOU WANT TO ADVERTISE OR PUT A STORY IN
WE MUST HAVE IT BY**

FRIDAY NOVEMBER 18th 2016

ELLIOTT INSTALLATIONS



Bespoke Kitchen, Bathroom & Bedroom Installations

We provide a full service package which not only includes the supply and installation of your new kitchen or bathroom but also all of the associated plumbing & tiling, electrical installation, plastering, small building works and decoration. Our highly skilled fitters and engineers will see to every detail of your installation from start to finish and with each job supervised you can relax and watch your new room take shape to your custom design. We are members of Checkatrade with an average rating of 9.7 and also Kent County Council Trading Standards approved with all the relevant accreditations and insurances.

A family run business so our reputation is our guarantee.

Telephone 01622 616117

website: www.elliottinstall.co.uk email: elliott.install@gmail.com



Does your dog need a bath or haircut?

The mobile dog grooming salon that
comes to your door . . . less stress for
you and your dog.

Please ring Sue for a quotation on:

T: 01622 902013

M: 07807 929602

I am a very experienced dog groomer, in the business for 7 years. I recently moved into the area and am pleased to offer my van based dog grooming services, for all small to medium size breeds.

STOCKBURY PARISH (NOT SO SHORT) SHORTS

- provided by our very own roving reporters at the Parish Council meeting

BOLLARDS! - a hit and run was carried out on the village green one quiet afternoon in September, resulting in some posts being knocked out, oh, yes, those posts that had been oh so securely inserted a few years ago. We think the car would have been damaged...a bit!

CRIME - (other than the hit and run affair mentioned above) - one theft of a motor vehicle. Poaching was reported in the area. After a 101 call (and amazingly responded to) the “perps” were caught “bang to rights” (has someone been watching too much crime TV?) with hares and poaching equipment in the back of their vehicle. Who knew there were hares round here?

LIGHTS! ACTION! - Floodlights that have been causing light pollution for some time at the aerodrome have been dealt with. No, sorry, that should read “the floodlights that have been causing annoying light pollution have been turned up the right way” - they had been installed upside down! They’re still annoying but at least they’re not quite as bright now.

BINBURY PARK - Binbury? Yes, Binbury. Not Bimbury? Seems not. Anyway, the developers are putting on a second public consultation over its proposed **Binbury** Park development at Stockbury/Detling (by the time you’re reading this, it will have taken place - 25th October). If approved it will create the county’s largest country park and deliver significant strategic highways improvements onto the A249 (the developer’s words taken from their website, not our words). Obviously, after considering feedback from the 100 locals who attended the first consultation and have amended plans to now include approximately 1,150 mixed private and affordable housing, 650,000 sq ft of commercial space, a hotel, a local centre, primary school, highways improvements onto the A249 and new access into the Kent Showground. The revised proposal also details a new country park and associated open space. They also say, “Our vision for Binbury Park is to create a development that will provide economic and leisure opportunities for those living, working and visiting the local area. A key advantage of this site, which is adjacent to the Detling Aerodrome Industrial Estate, is that it makes use of existing road infrastructure – unlike a lot of proposed development in locations which don’t have the infrastructure to cope.”

We have a suggestion: the nice folk at Quinns (the developers) should live in one of their super new homes and we reckon they’ll have it on the market in no time after sitting on the A249 during rush hour for a few weeks. Too harsh?

NEIGHBOURHOOD WATCH – the new scheme is being launched on 7th December. More details on the flyer through your letterbox soon.

STOCKBURY BUS – it’s been recalled by Ford. Don’t worry, it’s nothing too serious: one of the doors has a faulty child lock with a sign to say “Emergency Exit”! You couldn’t make it up.

“MYSTERY (LOCKED) BOX APPEARS ON VILLAGE HALL WALL” - situated under the Stockbury Cricket Club sign. It’s our very own defibrillator! Already! Thanks to Jenny Whittle for acquiring a KCC grant to pay for it and to Graham Seymour for donating his time and installing it so quickly. If a cardiac arrest happens somebody must **immediately** call 999 and the code to open the box will be given to you. It’s easy to use and could save a life.

STOCKBURY WI.

INVITE YOU TO

CAROLS ON THE GREEN

WITH

THE SALVATION ARMY BAND

ON

FRIDAY 9TH DECEMBER 2016 7.00 TO 7.30pm

ON THE VILLAGE GREEN

FESTIVITIES CONTINUE IN THE VILLAGE HALL WITH

CHRISTMAS CAROLS, REFRESHMENTS AND RAFFLE

PLEASE BRING YOUR OWN TORCH OR LANTERN

EVERYBODY WELCOME

SPONSORED BY M.B. FARMS

CUSTOMES BY WENDYS WARDROBE

Donations of non-perishable foods for

Salvation Army Christmas Appeal

would be appreciated



STOCKBURY PARISH (NOT SO SHORT) SHORTS

- provided by our very own roving reporters at the Parish Council meeting

BOLLARDS! - a hit and run was carried out on the village green one quiet afternoon in September, resulting in some posts being knocked out, oh, yes, those posts that had been oh so securely inserted a few years ago. We think the car would have been damaged...a bit!

CRIME - (other than the hit and run affair mentioned above) - one theft of a motor vehicle. Poaching was reported in the area. After a 101 call (and amazingly responded to) the “perps” were caught “bang to rights” (has someone been watching too much crime TV?) with hares and poaching equipment in the back of their vehicle. Who knew there were hares round here?

LIGHTS! ACTION! - Floodlights that have been causing light pollution for some time at the aerodrome have been dealt with. No, sorry, that should read “the floodlights that have been causing annoying light pollution have been turned up the right way” - they had been installed upside down! They’re still annoying but at least they’re not quite as bright now.

BINBURY PARK - Binbury? Yes, Binbury. Not Bimbury? Seems not. Anyway, the developers are putting on a second public consultation over its proposed **Binbury** Park development at Stockbury/Detling (by the time you’re reading this, it will have taken place - 25th October). If approved it will create the county’s largest country park and deliver significant strategic highways improvements onto the A249 (the developer’s words taken from their website, not our words). Obviously, after considering feedback from the 100 locals who attended the first consultation and have amended plans to now include approximately 1,150 mixed private and affordable housing, 650,000 sq ft of commercial space, a hotel, a local centre, primary school, highways improvements onto the A249 and new access into the Kent Showground. The revised proposal also details a new country park and associated open space. They also say, “Our vision for Binbury Park is to create a development that will provide economic and leisure opportunities for those living, working and visiting the local area. A key advantage of this site, which is adjacent to the Detling Aerodrome Industrial Estate, is that it makes use of existing road infrastructure – unlike a lot of proposed development in locations which don’t have the infrastructure to cope.”

We have a suggestion: the nice folk at Quinns (the developers) should live in one of their super new homes and we reckon they’ll have it on the market in no time after sitting on the A249 during rush hour for a few weeks. Too harsh?

NEIGHBOURHOOD WATCH – the new scheme is being launched on 7th December. More details on the flyer through your letterbox soon.

STOCKBURY BUS – it’s been recalled by Ford. Don’t worry, it’s nothing too serious: one of the doors has a faulty child lock with a sign to say “Emergency Exit”! You couldn’t make it up.

“MYSTERY (LOCKED) BOX APPEARS ON VILLAGE HALL WALL” - situated under the Stockbury Cricket Club sign. It’s our very own defibrillator! Already! Thanks to Jenny Whittle for acquiring a KCC grant to pay for it and to Graham Seymour for donating his time and installing it so quickly. If a cardiac arrest happens somebody must **immediately** call 999 and the code to open the box will be given to you. It’s easy to use and could save a life.

STOCKBURY WI

INVITE YOU TO

CAROLS ON THE GREEN

WITH

THE SALVATION ARMY BAND

ON

FRIDAY 9TH DECEMBER 2016 7.00 TO 7.30pm

ON THE VILLAGE GREEN

FESTIVITIES CONTINUE IN THE VILLAGE HALL WITH

CHRISTMAS CAROLS, REFRESHMENTS AND RAFFLE

PLEASE BRING YOUR OWN TORCH OR LANTERN

EVERYBODY WELCOME

SPONSORED BY M.B. FARMS

CUSTOMES BY WENDYS WARDROBE

Donations of non-perishable foods for

Salvation Army Christmas Appeal

would be appreciated







Oil Boiler Specialists

A big thank you to all my loyal customers.

I have been doing a lot of training and readying my company for the new RHI launch and to this effect we can now offer you biomass boilers

(log, pellet and woodchip) and thermal Solar panels.

All design and installs in-house

and this will allow you to gain the MCS payment from the government to cover the cost of installation.

I will still be the best oil technician I can be for you all and keep your oil boilers running at their best.

Give me a call or email

Mark Viccars

Chestnut Plumbing

07894067151

01795 842291

chestnutplumbing@yahoo.co.uk



OFTEC & HETAS registered and certified

Local Electrician

Domestic electrical installation & repair work

undertaken to high standard

No job too small

Part P BS7671 Qualified

Free Estimates

Call - Graham Seymour

Tel:01622 884288

Mobile:07522 666116



Pet Portraits

Created from your favourite photos

Choose from Oil paints, Pencils or Coloured pencils



Call Amanda on 01795 842570 or 07926 919631

www.theportraitworkshop.com

the physiotherapy centre

(Established 20 years in Sittingbourne High Street)

Stay Fit...Stay Active

*Make every day a
'day against' pain...*



Fully Qualified Male & Female

Chartered Physiotherapists

(MCSP & HCPC Registered)

The Coach House, 39b High Street, Sittingbourne ME10 4AW

We also have a Practice in Gillingham

if you would like more details contact us in Sittingbourne

info@thephysiotherapycentre.co.uk **01795 435060**

www.thephysiotherapycentre.co.uk

Stockbury gardeners November 2016

The gardeners had the AGM in October together with the autumn show. The current committee was voted to remain for the next 12 months. The entries in the show were of a very high standard and all of the members deserve credit for the quality of entries especially as the weather has been very harsh this season.

This month would be a good chance to plant fruit trees and roses, I noticed some bargains on the shelves of the "German stores" last week, with good quality apple pears and peaches, all at rock bottom prices. The trees were bare rooted meaning that they are lifted from the growing position and wrapped in moist compost and polythene ready for planting ; all you need to do is prepare the ground. So to keep warm get digging! On planting choose a sunny spot and once the hole is manured or compost put in the bottom, drive a stout stake to hold the tree in the ground first, that way you avoid damaging the roots.

The garden this month should be dug over in order to let the air in to the soil and expose grubs for our feathered friends to eat, how many of you have a friendly Robin watching when you are digging? I had one a few years ago who was very familiar with me.



- You should by now have cleaned and washed down the glass in the greenhouse, in the rose and vegetable gardens clear leaves and old vegetables compost them.
- Reflecting on my advice given regarding cleanliness in the garden, there are benefits in leaving areas for wildlife, if you are lucky enough to have an area that you can leave "wild" by that no sprays slug pellets etc. and even leave rotting logs you will give a boost to our wildlife, these areas can be linked to several areas and even neighbours gardens could do the same and you will be surprised what happens if you keep your eyes open, even the hedgehog would benefit of

you are able to leave access holes for him to roam around all of the gardens at night, the plus point is he eats slugs.

- Gardeners should by now have planned your sowing for next year and chosen seeds from the usual catalogues, Stockbury members should have had the seed catalogue from us by now and be able to place orders at the next meeting, receiving a hefty 50% discount on our baulk order scheme.
- Similarly please place orders for compost which we arrange to collect from the village shop in early 2017.

Our next meeting is on the **3rd of November at 8.00 p.m.** and the subject is **"food for free"** a subject about foraging in hedgerows.

Members and prospective members would be welcome.

Chris Spree

A Big Thank You to Aston !



On realising that the street sign on Church Hill had been knocked down some time ago, Aston Monk decided that it should be replaced. On his own initiative, he dug new holes for the posts and put the sign back using concrete to make it secure. A local resident offered to help, but Aston quickly established that the elderly man was not up to the task and confined his activities to holding the sign whilst he completed the task, using a spirit level for absolute accuracy!

Thanks again Aston - great job

Stockbury gardeners November 2016

The gardeners had the AGM in October together with the autumn show. The current committee was voted to remain for the next 12 months. The entries in the show were of a very high standard and all of the members deserve credit for the quality of entries especially as the weather has been very harsh this season.

This month would be a good chance to plant fruit trees and roses, I noticed some bargains on the shelves of the "German stores" last week, with good quality apple pears and peaches, all at rock bottom prices. The trees were bare rooted meaning that they are lifted from the growing position and wrapped in moist compost and polythene ready for planting ; all you need to do is prepare the ground. So to keep warm get digging! On planting choose a sunny spot and once the hole is manured or compost put in the bottom, drive a stout stake to hold the tree in the ground first, that way you avoid damaging the roots.

The garden this month should be dug over in order to let the air in to the soil and expose grubs for our feathered friends to eat, how many of you have a friendly Robin watching when you are digging? I had one a few years ago who was very familiar with me.



- You should by now have cleaned and washed down the glass in the greenhouse, in the rose and vegetable gardens clear leaves and old vegetables compost them.
- Reflecting on my advice given regarding cleanliness in the garden, there are benefits in leaving areas for wildlife, if you are lucky enough to have an area that you can leave "wild" by that no sprays slug pellets etc. and even leave rotting logs you will give a boost to our wildlife, these areas can be linked to several areas and even neighbours gardens could do the same and you will be surprised what happens if you keep your eyes open, even the hedgehog would benefit of

you are able to leave access holes for him to roam around all of the gardens at night, the plus point is he eats slugs.

- Gardeners should by now have planned your sowing for next year and chosen seeds from the usual catalogues, Stockbury members should have had the seed catalogue from us by now and be able to place orders at the next meeting, receiving a hefty 50% discount on our baulk order scheme.
- Similarly please place orders for compost which we arrange to collect from the village shop in early 2017.

Our next meeting is on the **3rd of November at 8.00 p.m.** and the subject is **"food for free"** a subject about foraging in hedgerows.

Members and prospective members would be welcome.

Chris Spree

A Big Thank You to Aston !



On realising that the street sign on Church Hill had been knocked down some time ago, Aston Monk decided that it should be replaced. On his own initiative, he dug new holes for the posts and put the sign back using concrete to make it secure. A local resident offered to help, but Aston quickly established that the elderly man was not up to the task and confined his activities to holding the sign whilst he completed the task, using a spirit level for absolute accuracy!

Thanks again Aston - great job

CHRISTMAS FAYRE

Jewellery Crafts

Christmas cards/Paper

Plants & Planters

Angora Knitwear & Cakes

Honey, Cheese, Preserves

Fresh produce

Saturday 3rd December

TEAS/COFFEES & SAUSAGE ROLLS /

BACON ROLLS

MINCE PIES

SPECIAL DRAW CHRISTMAS HAMPER

RAFFEL PRIZES

CONTACT BRENDA 01622 884746



STARTS 10 AM AND FINISHES 1 PM

MAIDSTONE SYMPHONY

We're delighted that our President, the world renowned pianist John Lill, will be playing his favourite Beethoven Piano Concerto No. 3 on 4 February 2017. Elsewhere we've four superb young prize-winning soloists, starting with a brilliant Russian, Alexander Panfilov, in Shostakovich's popular 2nd Piano Concerto (15 October). We've a Kiwi, New Zealander Benjamin Baker, playing Bruch's much-loved 1st Violin Concerto (3 December), and a Bulgarian, Michael Petrov, in Dvorak's wonderful Cello Concerto (20 May). We also welcome Amy Harman, the virtuoso Principal bassoonist of the Philharmonia Orchestra, playing Mozart's delightful Bassoon Concerto (25 March). To encourage new audience members, tickets are **FREE** for children under the age of 18, and just £5 for Students above the age of 18. Full concert details are shown below. The concert starts at 7.30pm, and you are also invited to a FREE Pre-concert talk at 6.40pm. These talks are given by Steve Migden, and are always guaranteed to be interesting and informative, presented with a touch of humour.

To book your free tickets, click on this link and select 'FREE Children under 18' www.mso.org.uk/booknow Alternatively, you can call me on 07544 715013.

Please also note our "HALF PRICE OFFER" for New Season Ticket Holders, which means that if you haven't previously held a season ticket, you can attend all 5 concerts for as little as £25!

The other concerts this year will be on:-

3 December 2016 - Elgar - Introduction & Allegro for strings Bruch - Violin Concerto No. 1 Schumann - Symphony No. 3 "Rhenish" - **4 February 2017** Weber - Overture, Oberon Beethoven - Piano Concerto No. 3 Brahms - Symphony No. 4 **25 March 2017** Smetana - Overture, The Bartered Bride Mozart - Bassoon Concerto, K191 Berwald - Konzertstycke for bassoon Sibelius - Symphony No. 2 **20 May 2017**
Mussorgsky - A Night on the Bare Mountain Dvorak - Cello Concerto Tchaikovsky - Symphony No. 6 "Pathétique"

**John Moore Schools Liaison
Maidstone Symphony Orchestra**

concerts@mso.org.uk

Your Stockbury Observer needs YOU!

The 'Parish Plan' and how we are implementing it was item 18 on the agenda at the last Parish Council meeting. Those of us who were still awake by the time we reached that item were energized by the discussion on the topic of the Stockbury Observer. For a small village it's fantastic that we have our own newsletter and many thanks to those of you who give up your time to create and distribute it. Also, many thanks to those who take the time to contribute to each edition, I'm sure that an eagerly awaited highlight of the publication for many of us is the latest snippet of sage advice and wit from Mr Cockett, our own village Poet Laureate. The Observer is a great way for parishioners to keep in touch with what's happening (or not happening!) in the village and in the clubs and societies and it's also very useful for keeping up to date with events occurring in and around the village. We think that the Observer is an essential part of the 'esprit de Stockbury', a great means of communication between villagers and an asset to our community.

The Observer could however, be so much more than it is at present and we want to make it the best it can be. **It is your newsletter** so it should reflect what you want to see in it. It could contain more articles and information on lots of topics, (not necessarily related to the village), snippets of gossip (keep it clean and legal), recipes, job vacancies, local help available, car sharing, pets column, handy hints, small ads, Neighbourhood Watch, the list of things we could include is as long as your imagination allows and your differing interests extend to. In this we are very fortunate to have in the village a wealth of talent: artists, writers, musicians, techies, engineers, advertising execs, electricians, builders, interior designers, marketing execs (usually on holiday).

So, in order to develop and enhance the Observer, we would like to urge everyone in the village to contact us with ideas, suggestions, opinions and articles for publication etc. We would particularly love to hear from anyone who would like to get involved in the creation and publication of the newsletter. At the moment we have a very small

team who do a sterling job in getting it published every month but we really do need more volunteers with technical skills if we are to develop and enhance it as we'd like to. Therefore, we'd be really grateful for some additional help from anyone with publishing, editing or other newspaper/magazine related skills, or advanced computer skills, to contact us to offer any help you can with this aspect of the newsletter. If you aren't sure your particular skill is needed just contact us anyway and have a chat.

So, with apologies to Mr Cockett. . . .

Stockbury Observer's here to stay

It lives to publish another day

More help needed, articles too

What does it really need?

It needs YOU... *(article for Stockbury Parish Council)*

Contact: stockburyobserver@gmail.com

BOOK CLUB, STOCKBURY The Lie by Helen Dunmore

In this story Daniel Branwell has returned from the First World War, to his village in Cornwall, from France. His commanding officer and close school friend Frederick Dennis did not return and there lies the nub of the tale. Daniel is shell shocked and has feelings of guilt about his survival; to cap it all his mother has died and he is left homeless. He comes to an arrangement with an elderly recluse, and erects a makeshift shelter on her land. Unfortunately she falls ill and dies very soon after, leaving him with a dilemma.

The tragedy of this individual's life is described well but unfortunately, in the opinion of most members of our group, the manner of Helen Dunmore's writing is rather disjointed. She switches constantly from the present of the book, back to the warfare in the trenches, quite without warning. The descriptions of the horror and the thoughts of the main character are often graphic and disturbing and the tragedy of Daniel's situation has veracity. In this regard the atmosphere of the time is made very apparent but there is little relief causing the story to be one dimensional.

Although it is a short novel it became tedious reading for the majority of the group and we gave it 5/10. It has to be said that one member considered the book a triumph and gave it a much higher score ! We are all different... fortunately.

Ann Rich

Your Stockbury Observer needs YOU!

The 'Parish Plan' and how we are implementing it was item 18 on the agenda at the last Parish Council meeting. Those of us who were still awake by the time we reached that item were energized by the discussion on the topic of the Stockbury Observer. For a small village it's fantastic that we have our own newsletter and many thanks to those of you who give up your time to create and distribute it. Also, many thanks to those who take the time to contribute to each edition, I'm sure that an eagerly awaited highlight of the publication for many of us is the latest snippet of sage advice and wit from Mr Cockett, our own village Poet Laureate. The Observer is a great way for parishioners to keep in touch with what's happening (or not happening!) in the village and in the clubs and societies and it's also very useful for keeping up to date with events occurring in and around the village. We think that the Observer is an essential part of the 'esprit de Stockbury', a great means of communication between villagers and an asset to our community.

The Observer could however, be so much more than it is at present and we want to make it the best it can be. **It is your newsletter** so it should reflect what you want to see in it. It could contain more articles and information on lots of topics, (not necessarily related to the village), snippets of gossip (keep it clean and legal), recipes, job vacancies, local help available, car sharing, pets column, handy hints, small ads, Neighbourhood Watch, the list of things we could include is as long as your imagination allows and your differing interests extend to. In this we are very fortunate to have in the village a wealth of talent: artists, writers, musicians, techies, engineers, advertising execs, electricians, builders, interior designers, marketing execs (usually on holiday).

So, in order to develop and enhance the Observer, we would like to urge everyone in the village to contact us with ideas, suggestions, opinions and articles for publication etc. We would particularly love to hear from anyone who would like to get involved in the creation and publication of the newsletter. At the moment we have a very small

team who do a sterling job in getting it published every month but we really do need more volunteers with technical skills if we are to develop and enhance it as we'd like to. Therefore, we'd be really grateful for some additional help from anyone with publishing, editing or other newspaper/magazine related skills, or advanced computer skills, to contact us to offer any help you can with this aspect of the newsletter. If you aren't sure your particular skill is needed just contact us anyway and have a chat.

So, with apologies to Mr Cockett. . . .

Stockbury Observer's here to stay

It lives to publish another day

More help needed, articles too

What does it really need?

It needs YOU... *(article for Stockbury Parish Council)*

Contact: stockburyobserver@gmail.com

BOOK CLUB, STOCKBURY The Lie by Helen Dunmore

In this story Daniel Branwell has returned from the First World War, to his village in Cornwall, from France. His commanding officer and close school friend Frederick Dennis did not return and there lies the nub of the tale. Daniel is shell shocked and has feelings of guilt about his survival; to cap it all his mother has died and he is left homeless. He comes to an arrangement with an elderly recluse, and erects a makeshift shelter on her land. Unfortunately she falls ill and dies very soon after, leaving him with a dilemma.

The tragedy of this individual's life is described well but unfortunately, in the opinion of most members of our group, the manner of Helen Dunmore's writing is rather disjointed. She switches constantly from the present of the book, back to the warfare in the trenches, quite without warning. The descriptions of the horror and the thoughts of the main character are often graphic and disturbing and the tragedy of Daniel's situation has veracity. In this regard the atmosphere of the time is made very apparent but there is little relief causing the story to be one dimensional.

Although it is a short novel it became tedious reading for the majority of the group and we gave it 5/10. It has to be said that one member considered the book a triumph and gave it a much higher score ! We are all different... fortunately.

Ann Rich

ART EXHIBITION

STOCKBURY VILLAGE HALL

ORIGINAL PICTURES

BEAUTIFUL BAGS

HANDPAINTED CARDS

FUNKY TOYS

CREATIONS IN WOOD

FASCINATING
PHOTOGRAPHS

and

a chance for a personalised
picture of you

FLYING WITH
'THE SNOWMAN' !



A wide range of local art and craft

SOMETHING FOR ALL POCKETS!

Keep calm, it's only an extra Chromosome !

Elodie says thank you.

I didn't see much of my Daddy in the spring because he was spending quite a lot of time riding his bike* so he could ride from London to Paris to raise money for the Down's Syndrome Association.

But when it was close to him going, he was having a lot of trouble with his back which had gone into something called "spasm" which he later found out was because he had a prolapse disc. I'm only 3 so I didn't really know what that is or why he was in so much pain, but the doctor was quite helpful and my Mum says Dad can be a bit stubborn, when he puts his mind to something it can be difficult to stop him.

So I didn't get to see him on his 50th birthday because he had left by the time I woke up, but I spoke to him later on when he was in Calais that night. And because of all the tablets he was taking for his back, he couldn't even have a beer on his birthday!!!

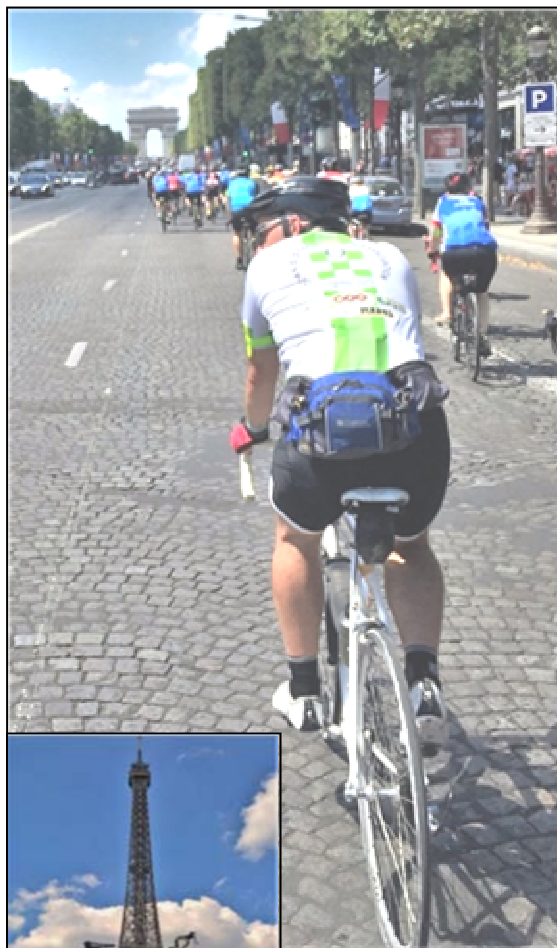
Anyway, he apparently really enjoyed riding through France and got to ride up a bumpy lumpy road made of rocks in the middle of Paris before some bloke called Chris Froome and his mates did it the day after. But what Chris didn't get to do was the celebration bike lift under the Eiffel Tower, with some of his friends that he had met along the way holding the bicycle up for him.

And it seems that there are some very generous people out there as they gave him money for doing it, over £4500 which is apparently quite a lot and the Down's Syndrome Association will be very grateful for it.

Thank you once again,

Elodie Canham,
Glebe House,
Stockbury.

*** Since April the training alone was 158 hours in the saddle, over 2000 miles and 12000ft of climbing – 4 times up Everest!**



Water Performance

*In the recent past, a day and a half
To stop a leak was quite enough*

*The system employed now, mores the pity
Is supervised by desk bound committee*

*The Water Board people turned up late
Taking many days to contemplate*

*The chap who digs the holes is William
He always takes seven days to fill um!*

John Cockett

Stockbury Village Hall needs you !

The village hall committee needs a couple of new members to sit on the hall committee. This is not time consuming but really important since our hall is well used and financially secure. If you would like to know more please call

Mick Bingham 01795 842480

DO YOU REMEMBER Forty years ago, that is, 1976 ?

It was the year of the long heat wave and the drought; Harold Wilson resigned as Prime Minister and the International Monetary Fund bailed out Britain; the Sex Pistols raised two fingers to the establishment, a pint of beer cost 32pence and petrol was 77pence a gallon.

Keep calm, it's only an extra Chromosome !

Elodie says thank you.

I didn't see much of my Daddy in the spring because he was spending quite a lot of time riding his bike* so he could ride from London to Paris to raise money for the Down's Syndrome Association.

But when it was close to him going, he was having a lot of trouble with his back which had gone into something called "spasm" which he later found out was because he had a prolapse disc. I'm only 3 so I didn't really know what that is or why he was in so much pain, but the doctor was quite helpful and my Mum says Dad can be a bit stubborn, when he puts his mind to something it can be difficult to stop him.

So I didn't get to see him on his 50th birthday because he had left by the time I woke up, but I spoke to him later on when he was in Calais that night. And because of all the tablets he was taking for his back, he couldn't even have a beer on his birthday!!!

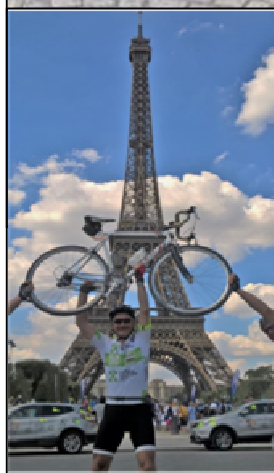
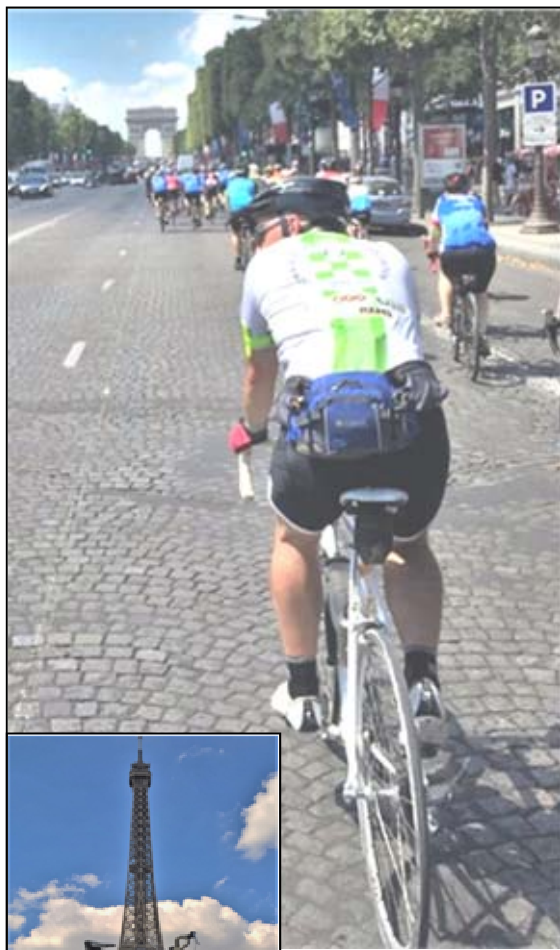
Anyway, he apparently really enjoyed riding through France and got to ride up a bumpy lumpy road made of rocks in the middle of Paris before some bloke called Chris Froome and his mates did it the day after. But what Chris didn't get to do was the celebration bike lift under the Eiffel Tower, with some of his friends that he had met along the way holding the bicycle up for him.

And it seems that there are some very generous people out there as they gave him money for doing it, over £4500 which is apparently quite a lot and the Down's Syndrome Association will be very grateful for it.

Thank you once again,

Elodie Canham,
Glebe House,
Stockbury.

*** Since April the training alone was 158 hours in the saddle, over 2000 miles and 12000ft of climbing – 4 times up Everest!**



Water Performance

*In the recent past, a day and a half
To stop a leak was quite enough*

*The system employed now, mores the pity
Is supervised by desk bound committee*

*The Water Board people turned up late
Taking many days to contemplate*

*The chap who digs the holes is William
He always takes seven days to fill um!*

John Cockett

Stockbury Village Hall needs you !

The village hall committee needs a couple of new members to sit on the hall committee. This is not time consuming but really important since our hall is well used and financially secure. If you would like to know more please call

Mick Bingham 01795 842480

DO YOU REMEMBER Forty years ago, that is, 1976 ?

It was the year of the long heat wave and the drought; Harold Wilson resigned as Prime Minister and the International Monetary Fund bailed out Britain; the Sex Pistols raised two fingers to the establishment, a pint of beer cost 32pence and petrol was 77pence a gallon.

AWARD WINNING M B Farms

Monday to Friday 8.00 am—5.00 pm

Sunday 8.00a.m.—3.00p.m.

Saturday 9.00a.m.—5.00p.m.

Post Office hours

Mon, Tue, Thurs, Fri 9.00 am—5.00 pm

Saturday 9.00am—12 noon

Wednesday 9.00a.m.—4.00p.m.

National Lottery now available

Find us on Facebook!

CALLING ALL ADVERTISERS It's never too late...to advertise in the
Stockbury Observer

Our annual rates for advertising are very reasonable and have remained unchanged for the fifth, consecutive year:

£85 for a half page £55 for a quarter page

Our advertising year started in June and new adverts for less than 12 months duration will be charged on a pro-rata basis and prices on application for ads smaller than a quarter page. If you would like to take out an ad for the remainder of our advertising year, please email -stockburyobserver@gmail.com to express your intent. The editor will confirm receipt and an invoice will be sent along with details of how to pay.

If you are a new customer please also attach your ad, preferably in MS Word, Powerpoint or Publisher. Please bear in mind when designing your ad that large solid blocks of colour may not look so good in black and white on the paper version, despite looking great on our web version.

The Observer is delivered to every household in this parish plus there is our internet presence, so this is a great opportunity to promote **your business**

Community Bus

Weekly Schedule

Mondays – Sittingbourne

Tuesdays – Maidstone incl. Lockmeadow Market

Thursdays – Hempstead Valley Shopping Centre (Savacentre)

Pick ups from 9.30 am close to where you live

Call 07551-454702 to book your seat



Stockbury Parish Council Minutes

The minutes for our parish council meeting will be approved at the following meeting and will then be published on www.stockbury.org.uk within 5 days of the meeting at which they were approved

USEFUL CONTACT INFORMATION

Cricket Club—Tom Bulbrook 07780 440526
th.bul2@yahoo.com

Church Matters—St Mary Magdelene
Revd Liz Cox 01795 435184

elizabeth.cox448@btinternet.com

Community Bus—Booking line 07551 454702

Dancing Club—Brian Crisp 01634 231886

Dog Club—Mick Bingham 01795 842480

Electricity Problems **0800 7838866**

Environment Agency—Incident hotline 0800 807060

Fly Tipping & Waste Collection

Including bulky items 01622 602162

Gardeners—Lex Sargent 01795 842741

stockburygardeners@live.com

Golf Society—Jeff Hall 01795 843296

Hall Bookings—Sue Porter 01795 843715

Kent Messenger correspondent

Claire Adams 01795 841140

foxgloveadams@aol.com

Maidstone BC Councillor – Patrik Garten

01622 807907

patrikgarten@maidstone.gov.uk

MB Farms stores and Post Office 01795 842401

Neighbourhood Watch—

Not So Young Club—Shirley Moss 01795 842 691

Parish Council - Sherrie Babington **01634 867173**

Pétanque Club—Mick Bingham 01795 842480

Photographic Club—Tim Arnold **01795 843049**

timharnold@btinternet.com

Police – Emergency only **999**

Non-emergency **101**

& ALL General enquiries

Police Community Support Officer for Stockbury

PCSO Ryan Waring 07969584213

5872@kent.pnn.police.uk

PCSO Dave Rolley **07772226097**

59079@kent.pnn.police.uk

Crimestoppers (confidential) **0800 55511**

Public Footpaths & bridleway (problems with)

westprow@kent.gov.uk 03000 41 71 71

Roads, potholes etc (manned 24 hours) 03000 41 81 81

www.kent.gov.uk/roads-and-travel/report-a-problem

RSPCA 0300 1234999

Short Mat Bowls—Tony Russell 01795 842738

or Angela Russell 01795 842738

South East Water emergency **0333 000 0365**

South East Water Leak line **0333 000 3330**

Potholes

www.kent.gov.uk/roads-and-travel/report-a-problem

Stockbury Observer Editor **07944811668**

Brendan Ferrill—Stockburyobserver@gmail.com

WI Brenda Mace **01622 884 746**

